

hirepool

step-by-step

Laying Outdoor Paving

When you see the finished product,
you'll be glad you put the effort in!



hirepool

You'll need the following

Base coarse, bedding sand, jointing sand, pavers, timber framing, 60kg and 40kg plate compactors, hand screed, paving saw, extension lead, RCD life guard, shovel, yard broom, trailer, builder's level, wheelbarrow.



Step 1

Dig out and frame the area to be paved, to the depth of the combined paving, bedding sand and base coarse layers.

Fill with base coarse, compacting between layers where it's deeper than 10cm.



Step 2

Compact the base coarse using the 60kg compactor. It should be firm enough that the bedding sand will not be able to filter through.



Step 3

Pour on the sand and screed it to a uniform level, using temporary guides on each side to run your screed on.

Don't compact the bedding sand itself.



Step 4

Lay the full pavers first, starting from the straightest convenient edge. Leave 2mm - 4mm between each paver to allow the jointing sand to penetrate around them.



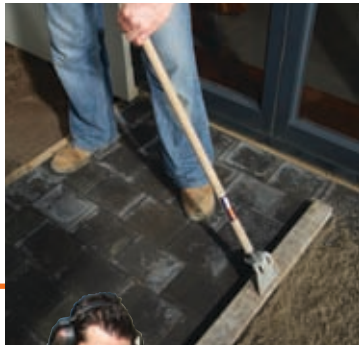
Step 5

Cut any other pavers to the required size using a concrete diamond saw or paving splitter, and lay in the same way.



Step 6

Sweep jointing sand over the whole area, and compact evenly using the 40kg compactor. Keep sweeping and compacting until all joints are filled.

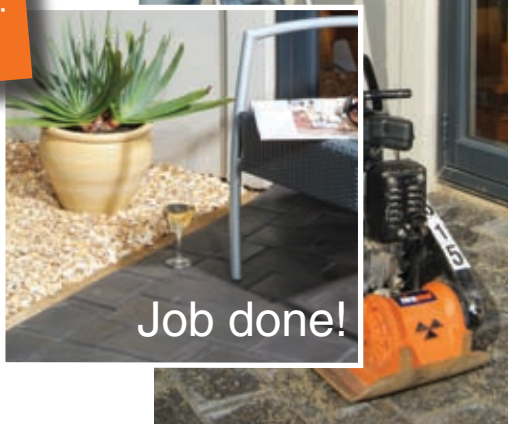
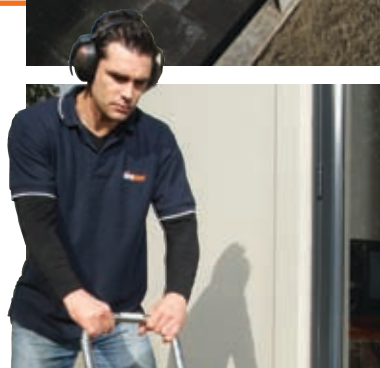


Tip

Special sealants are available to enhance the appearance of your paving – just apply and re-apply over time as required.

See our complete range of Hirepool step by step guides for other satisfying DIY projects you can do.

www.hirepool.co.nz



hirepool

step-by-step

hirepool
hire the experience